

Thaxted Astronomical Society

Space Missions

Mars 2020

Perseverance' And Ingenuity

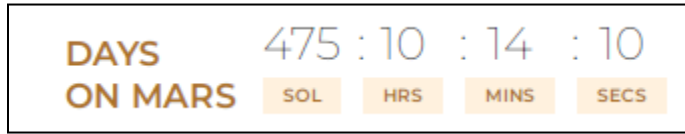
Mission Status 220622

Introduction

DAYS	475	:10	:14	:10
ON MARS	SOL	HRS	MINS	SECS

SM0000





Mission Status >

220421 > Mars 2020 is officially out of “Rapid Traverse” mode, where we put the pedal to the metal and focused on driving. This week, we are back to standard operations, and the team is beginning our Delta Front Campaign

220427 > This week on Mars, Perseverance officially began the “Delta Front Campaign.” This second campaign of the mission commenced on April 18th, 2022, the 415th sol since landing. Each campaign represents a sub-portion of the Mars 2020 mission and is dedicated to exploring a distinct region, drilling designated sets of cores for possible future return to Earth, and taking numerous in situ science observations with onboard instruments to study the environmental and geologic features that characterize that region

220519 > The past few weeks have been exciting ones for Perseverance’s science team. At the “Enchanted Lake” site, we took our first look at what appear to be some of the bottommost sedimentary layers that make up the Jezero crater delta.

220601 > Perseverance has a pet rock

For the past 4 months, Perseverance has had an unexpected traveling companion. Back on sol 341— that’s over 100 sols ago, in early February— a rock found its way into the rover’s front left wheel, and since hitching a ride, it’s been transported more than 5.3 miles

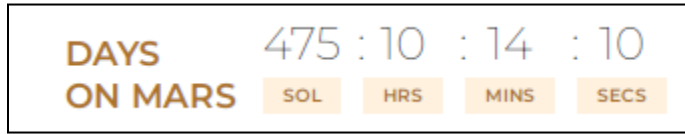
DAYS	475	:	10	:	14	:	10
ON MARS	SOL	HRS	MINS	SECS			



Mission Status >

220601 > Perseverance has a pet rock





Mission Status >

220618 > Perseverance’s exploration of the Hawksbill Gap area of the Jezero Delta continues! The rover has abraded at two different locations over the last few weeks.

First, the rover abraded in the **Devil’s Tanyard** area. Unfortunately, the crumbly rocks at Devils Tanyard were broken and moved by the force of the abrasion. Nevertheless, the team was able to use the SuperCam and Mastcam-Z instruments to gather valuable scientific data of the abrasion patch and surrounding area.

The rover then made its way up the delta to abrade at **Hogwallow Flats**, an area nicknamed “the Bacon Strip” by the team due to its light-colored striped rocks, which look like a strip of bacon in images taken by the Hi-Rise orbiter. The rocks at Hogwallow Flats appear to be very fine-grained, which is exciting to scientists on the mission as **fine-grained rocks may have the best chance at preserving evidence of life.**

<https://mars.nasa.gov/mars2020/mission/where-is-the-rover/>



Perseverance Rover Location >

This interactive map shows the landing site for NASA's Perseverance rover within Jezero Crater. Perseverance landed on Feb. 18, 2021. The map also shows the location of the Mars Helicopter.

DAYS	475	:	10	:	14	:	10
ON MARS	SOL		HRS		MINS		SECS



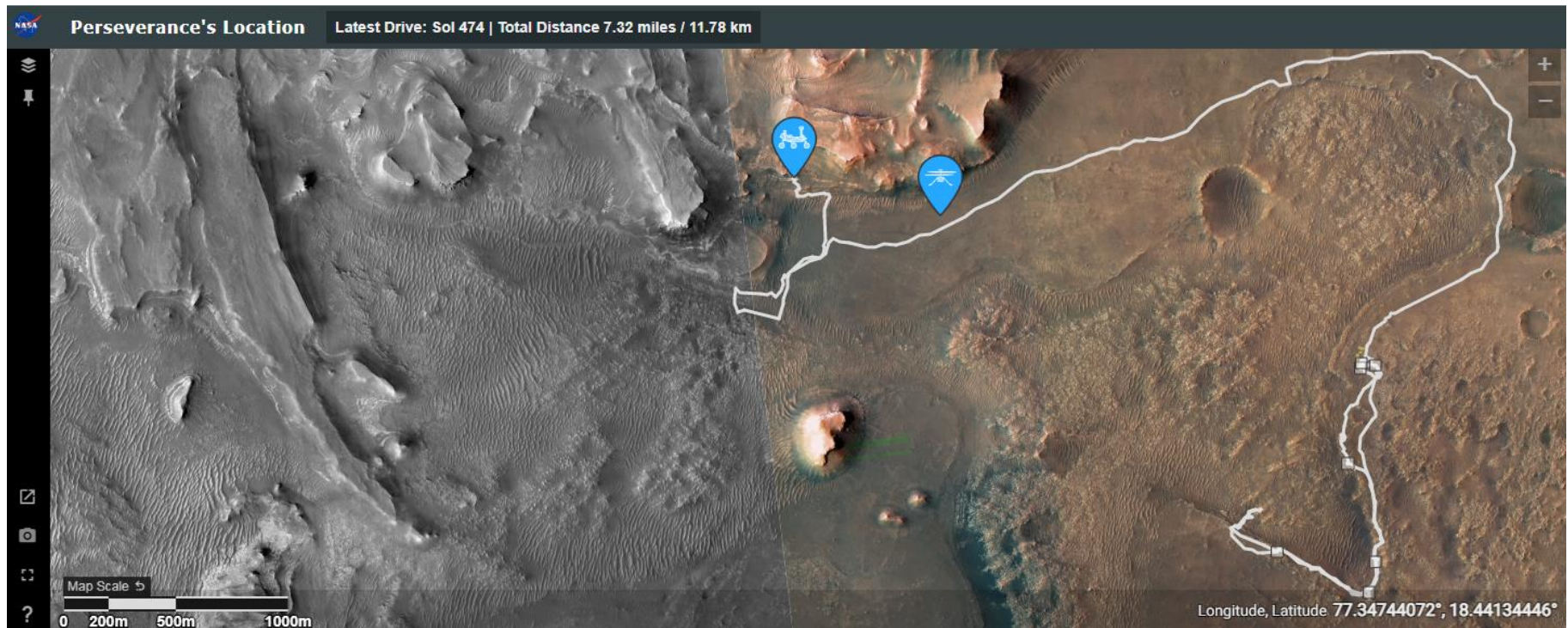
<https://mars.nasa.gov/mars2020/mission/where-is-the-rover/>



Perseverance Rover Location >

This interactive map shows the landing site for NASA's Perseverance rover within Jezero Crater. Perseverance landed on Feb. 18, 2021. The map also shows the location of the Mars Helicopter.

DAYS	475	:	10	:	14	:	10
ON MARS	SOL		HRS		MINS		SECS



<https://mars.nasa.gov/mars2020/mission/where-is-the-rover/>



Perseverance Rover Location >

This interactive map shows the landing site for NASA's Perseverance rover within Jezero Crater. Perseverance landed on Feb. 18, 2021. The map also shows the location of the Mars Helicopter.

DAYS	475	:	10	:	14	:	10
ON MARS	SOL	HRS	MINS	SECS			

